

The Grundfos Max-E Boost is a single pump variable speed packaged cold water booster set, designed as a compact and cost effective solution for pressure boosting of clean cold water.

- Boosting to pressurised hot and cold water systems in large domestic properties with three or more bathrooms, and light commercial buildings.
- Small irrigation systems with above ground storage tank.
- Water transfer to high level tanks.

The Max-E Boost uses Grundfos' own variable speed pump motor technology, to maintain a constant discharge pressure up to a maximum setting of 4.5bar.

The Grundfos CRIE 5-8 is soft started and stops which helps to eliminate pipe work noise normally caused by water hammer, with standard on/off controlled pumps. The pump is quiet in operation and its compact size makes it suitable for installation in a utility room, garage, or a frost protected outdoor enclosure.

The CRIE 5-8 stainless steel vertical multistage pump, pressure vessel and other components in contact with the pumped liquid are WRAS approved. The discharge manifold is made from grade 304 stainless steel.

The Max-E Boost must be connected to a Water Byelaw approved cold water storage tank having an AB Air Gap, of adequate capacity to suit the water consumption of the installation.



ELECTRICAL DATA

Electrical supply:	240V 1ph 50Hz
Full load current:	6.8A at 240V
Motor kW rating:	1.1kW
Full load input power:	1.36kW
Maximum fuse rating:	10A

MAXIMUM OPERATING CONDITIONS

Liquid temperature range:	+3 to +90°C
Ambient temperature:	up to +40°C
Relative Humidity:	95% non condensing
Sound pressure level:	65 dB(A)

OPERATION

The Max-E Boost is intended to supply boosted cold water from a water storage tank to a pressurised hot and cold water system at a constant outlet pressure.

The Max-E Boost is supplied complete with a pressure transducer, pressure vessel, non-return valve, isolating valves, pressure gauge, anti-vibration mountings, and isolator switch.

A drain cock is included to simplify commissioning of the vessel pre-charge pressure.

The pump is factory commissioned to deliver a constant 3 bar pressure at flow rates up to 1.9 l/s.

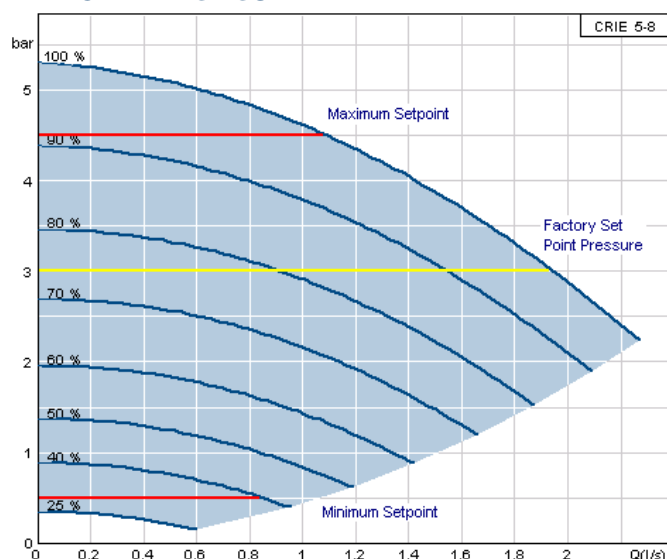
The controller within the variable speed motor monitors the pump discharge pressure signal from the integral pressure transducer. The speed of the motor is controlled to maintain a constant discharge pressure within the flow capacity of the pump.

The control panel on the pump motor indicates operating and fault conditions, and allows simple adjustment of the discharge pressure from 0.5bar to a maximum of 4.5 bar.

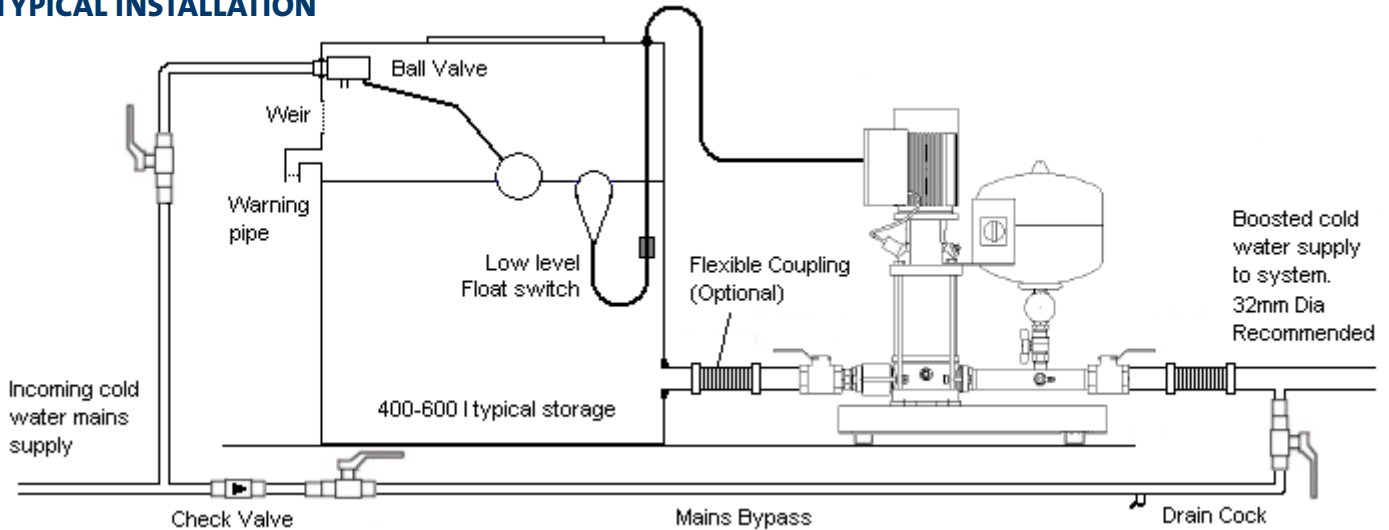
FEATURES

- Packaged booster set with integral controls
- Variable speed operation for constant pressure
- Factory commissioned to 3 bar, capacity 1.9 l/s
- WRAS approved pump and pressure vessel
- Supplied with anti vibration mountings
- Supplied with low level float switch
- For single phase 240V electrical supply
- Alarm contact
- Compact dimensions
- Low noise

PERFORMANCE CURVE



TYPICAL INSTALLATION



Any bypass arrangement must be installed strictly in accordance with the Water Byelaws Regulations. The bypass should be drained when not in use to prevent stagnation. A bypass must not be installed if pumping a non potable CAT 5 contaminated liquid. The diagram above is for guidance only.

LOCATION

The Max-E Boost set should be sited in a dry, well ventilated, and frost-free position, where it will not be subjected to extremes of temperature. Adequate drainage facilities must be provided to prevent water damage in case of leakage or loss of water during commissioning and service.

The Max-E Boost should not be installed into roof or loft spaces as even low levels of vibration as will cause a disturbance.

FOUNDATION & MOUNTING

The Max-E Boost can be installed with the anti-vibration mountings supplied on to a solid surface, or directly bolted to a concrete plinth or to an inertia base with springs. If used with anti vibration mountings or inertia base, flexible connectors should be fitted between the booster set and the system pipe work. Grundfos does not recommend installation of the Max-E Boost onto a wooden substrate due to noise and vibration transmission. If a booster set must be installed onto wooden flooring, an inertia base with springs must be used.

PUMPED LIQUIDS

Potable water, rainwater or other clean, thin, non-aggressive liquids, not containing solid particles or fibres.

PRODUCT CODES

Complete Max-E Boost: 97568782

OPTIONAL ACCESSORIES

1 1/4" BSPM Flexible Coupling: GBPC1001

REPLACEMENT PARTS

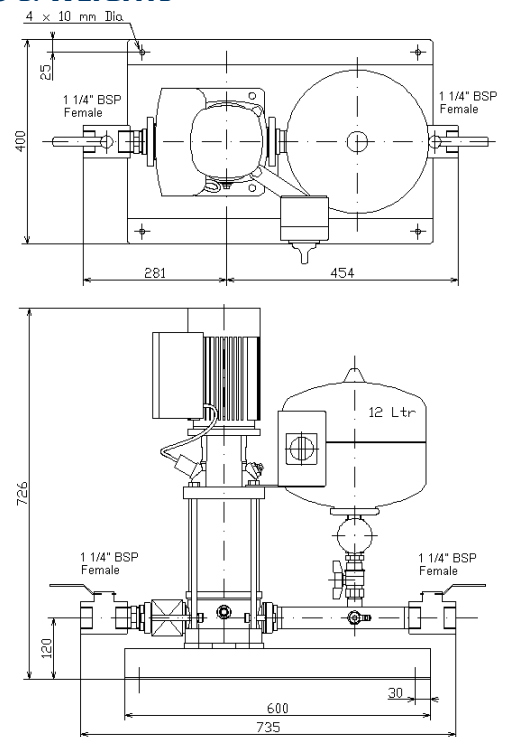
Pump CRIE 5-8 1.1kW: 96545406
 Expansion vessel GT-U-12V litre: 96573348
 Low level float switch: GBPS0099

STORAGE TANK SIZING

The Max-E Boost must be used in conjunction with a Byelaws compliant storage tank having a type AB Air Gap. The cold water storage tank must have an adequate capacity to meet the demand of the occupants. As a general rule, allow 115 litres storage per person.

The normal domestic water usage is approximately 125 to 150 litres per day per person, for standard fittings and usage. The supply capacity of the cold water mains should also be taken into account when sizing the cold water storage tank. For poor mains supplies, the storage tank capacity may need to be increased.

DIMENSIONS & WEIGHTS



All dimensions are in mm
 Weight dry: 42kg
 Weight wet: 58kg
 Shipping weight: 60kg

GB/MAX-E /SL/DBS/0611: Rev 7.2